

# CONNECTOR

---

## The Connector - Existing Bus Route Modifications

### U-M Routes




- For all alternatives, the proposed Northwood Shuttle and Baits Shuttle replace the following routes:
  - Commuter
  - Northwood
  - Northwood Express
  - Bursley-Baits
  - Diag to Diag
  - North Campus
  - Research Link (Medical Center Shuttle)
- For the Northwood Shuttle and the Baits/Stone Shuttle, a frequency of 10 minutes is assumed for consistency with existing routes
- For all alternatives, the following routes will remain:
  - Night Owl – it is recognized that this is a pilot project and may not be permanent
  - Oxford Shuttle
  - Med Express (Medical Center Shuttle) – with a stop added to service the VA Medical Center
  - UMHS Intercampus (Medical Center Shuttle) – retain only from NCRC east
  - Wall Street Service – A route will be added in June/July 2014 to service the new Wall Street Structure. It will mimic the existing Intercampus shuttle with final routing TBD.  
*Note: Wall Street service is not included in the model.*
- Depending on the alignment location (Main Street, railroad corridor, or State Street), different circulators may be required to service portions of the Central/South Campuses. Alternatives A, C, and D may require a Central Campus Circulator.

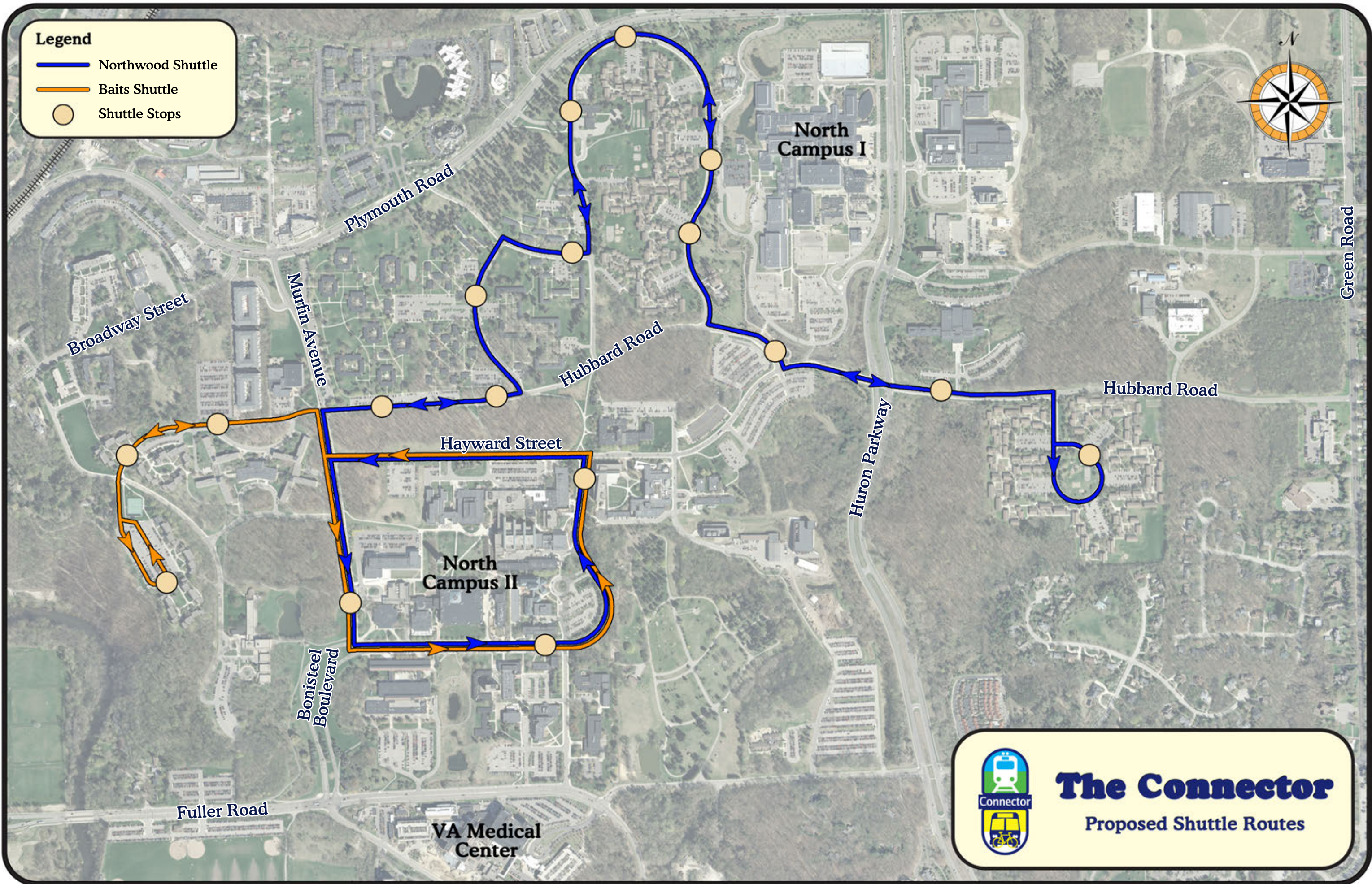
### AAATA Routes

- #1 (Pontiac Route): For all alternatives, terminate the route at the Connector station near Plymouth Road/Huron Parkway and eliminate service on the portion of the current route between Plymouth Road/Huron Parkway and North Campus.
- #2 (Plymouth Route): Eliminate current service for all alternatives. Replace with a circulator route serving neighborhoods north and south of Plymouth Road east of Nixon with service to Connector stations near Plymouth Road/Green Road and Plymouth Road/Huron Parkway and a second route between Plymouth Road/Huron Parkway and the Blake Transit Center via the Broadway Street Bridge (not to U-M Medical Center Campus).
- #6 (Ellsworth Route): For Alternatives A, B, C, D, and E, eliminate service between the Blake Transit Center and Briarwood Mall. Add a circulator serving portions of S. Industrial Highway, State Street, and Eisenhower Parkway which are not served by Connector. Leave unchanged for Alternative F.
- #7 (S. Main – East Route): For Alternative F only, eliminate service between the Blake Transit Center and Briarwood Mall and operate route between Briarwood Mall and Washtenaw Community College only. Leave unchanged for Alternatives A, B, C, D, and E.
- #36 (Wolverine Tower Shuttle): For Alternative A, eliminate evening service. No change in weekly schedule. For Alternatives B, C, D, and E, eliminate Route #36 and replace with a local circulator for S. State Street area between Stimson Street and Eisenhower Parkway. Leave unchanged for Alternative F.
- All other routes will remain unchanged for all alternatives



**Legend**

-  Northwood Shuttle
-  Baits Shuttle
-  Shuttle Stops



**The Connector**  
Proposed Shuttle Routes